

Part Four – Greenways and Open Space Vision

Cambria County Project Corridors

Cambria County features the following regional greenway project corridors:

- A. Ghost Town Trail Connector;
- B. Main Line Canal Greenway™;
- C. Laurel Hill Greenway (extremely limited in scope in Cambria County);
- D. Quemahoning Greenway; and
- E. Allegheny Front Wildlife Corridor.

County project corridors within Cambria County are described below.

C-1. Susquehanna Trail

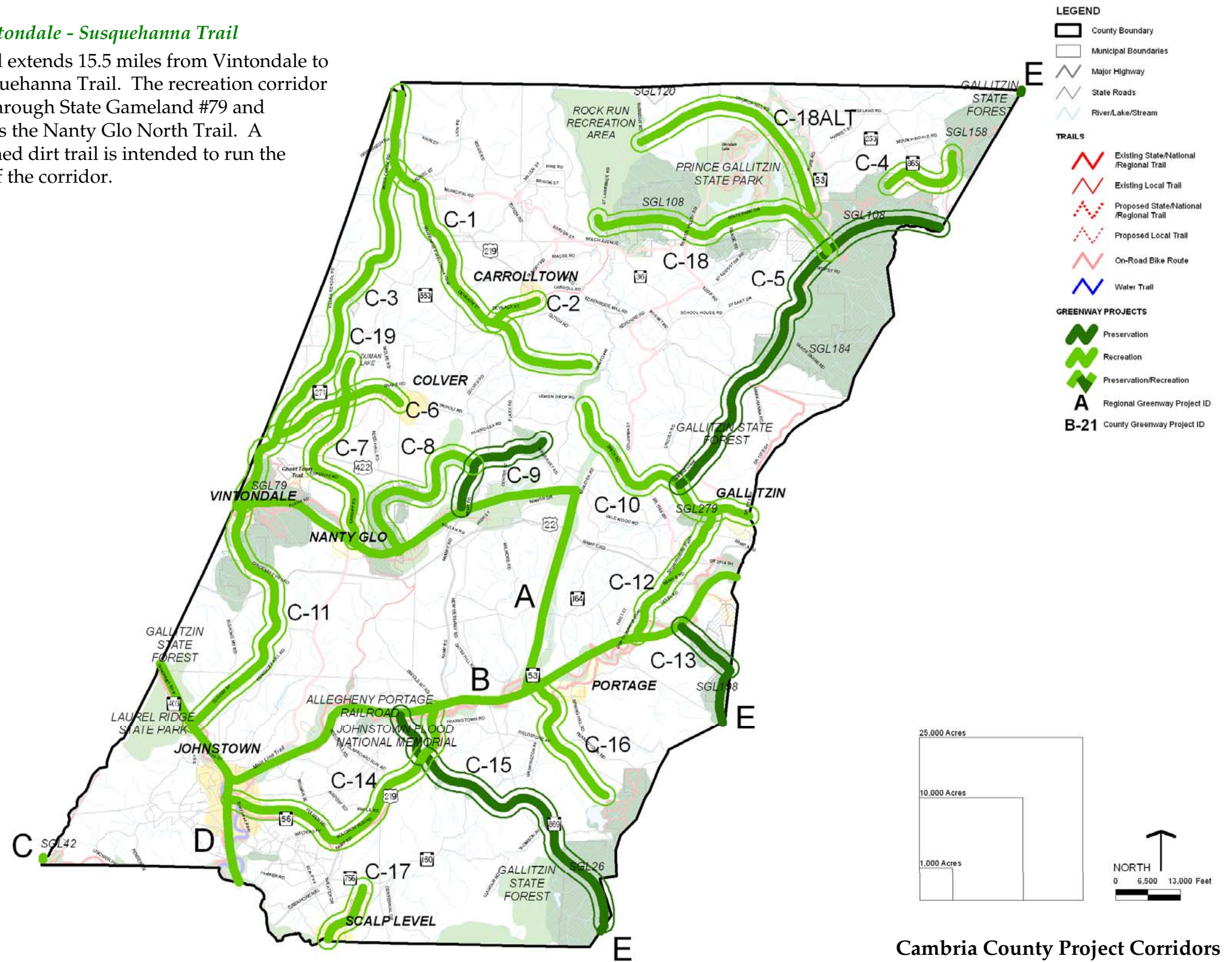
The Susquehanna Trail is an approximately 15 mile corridor that runs from the northwestern corner of the County to an intersection with the Ghost Town Trail. The Trail is envisioned to consist of a maintained dirt trail in combination with a water trail along the West Branch Susquehanna River. Intersections with the Carrolltown Trail and the Vintondale - Susquehanna Trail also occur along the corridor.

C-2. Carrolltown Trail

The Carrolltown Trail, traversing nearly 5 miles, is a recreation trail connects the Susquehanna Trail to Carrolltown. It is envisioned to include an improved/maintained dirt trail.

C-3. Vintondale - Susquehanna Trail

This trail extends 15.5 miles from Vintondale to the Susquehanna Trail. The recreation corridor passes through State Gameland #79 and intersects the Nanty Glo North Trail. A maintained dirt trail is intended to run the length of the corridor.



Cambria County Project Corridors

C-4. Gameland to Gameland Trail

The Gameland to Gameland Trail connects State Gamelands #108 and #158 via a recreational trail that is nearly 3.5 miles long. The corridor is envisioned to consist of a maintained dirt trail.

C-5. Clearfield Creek Wildlife Corridor

Clearfield Creek Wildlife Corridor is delineated to link existing blocks of publicly accessible open space. This Corridor stretches 16 miles across the northeastern portion of the County. Moreover, the Corridor passes through State Gamelands #184 and 108 as well as Gallitzin State Forest and intersects the Wildwood Springs Trail.

C-6. Colver Connector

This 5.5 mile recreation corridor links Colver to the Nanty Glo North Trail. The corridor is intended to include an improved/maintained dirt trail.

C-7. Nanty Glo North Trail

The Nanty Glo North Trail transverses nearly 7 miles northwest from Nanty Glo and the Ghost Town Trail Connector to the Vintondale - Susquehanna Trail. The improved/maintained dirt trail also intersects the Colver Connector.

C-8. Williams Run Trail

This recreational corridor runs northeast from the Ghost Town Trail Connector near Nanty Glo to an intersection with the Blacklick Creek Wildlife Corridor. The corridor is 7.5 miles long and could someday accommodate a maintained dirt trail.

C-9. Blacklick Creek Wildlife Corridor

Planned as a nearly 7 mile long preservation corridor that terminates at the Ghost Town Trail Connector. The preservation corridor is envisioned to be characterized by publicly accessible open space.



Figure 23: Segment of the Ghost Town Trail in Cambria County

C-10. Wildwood Springs Trail

The Wildwood Springs Trail runs 7.5 miles to Gallitzin. The corridor intersects the Clearfield Creek Wildlife Corridor and the Little Conemaugh Trail and passes through State Gameland #279. Wildwood Springs Trail is envisioned to be a maintained dirt trail.

C-11. Laurel Run Trail

The Laurel Run Trail extends south from Vintondale to an intersection with the Main Line Canal Greenway™ north of Johnstown. The 9.5 mile recreational corridor could be improved to include a maintained dirt trail.

C-12. Little Conemaugh Trail

This corridor stretches approximately 4.5 miles from the Wildwood Springs Trail to the Main Line Canal Greenway™. The Little

Conemaugh Trail accesses State Gameland #279 and is envisioned to consist of a maintained dirt trail.

C-13. Lilly Reservoir Wildlife Corridor

The Lilly Reservoir Wildlife Corridor is characterized by publicly accessible open space. The corridor extends southeast from the Main Line Canal Greenway™ to the eastern border of the County. A portion of the corridor is situated within State Gameland #198.

C-14. Johnstown - Portage Trail

This recreational corridor generally extends east from Johnstown to an intersection with the Main Line Canal Greenway™. The nearly 12 mile long corridor, which intersects the Flood Memorial Wildlife Corridor, is envisioned to include a maintained dirt trail.

C-15. Flood Memorial Wildlife Corridor

This approximately 12 mile preservation corridor extends southeast from the Main Line Canal Greenway™ and the Johnstown Flood National Memorial to the Allegheny Front Wildlife Corridor and the County's southeastern border. Portions of the Corridor are situated within State Gameland #26 and Gallitzin State Forest. The Corridor is intended to include publicly accessible open space.

C-16. Portage South Trail

This recreational corridor extends southeast from Portage and terminates in State Gameland #26. The approximately 5.5 mile corridor is envisioned to consist of a maintained dirt trail.

C-17. Scalp Level Loop

The Scalp Level Loop extends north from Scalp Level 2.5 miles. This recreational corridor is intended to include a maintained dirt trail.

C-18. Rock Run Connector

This recreational corridor extends from the Clearfield Creek Wildlife Corridor west to the Rock Run Recreation Area. The entire corridor is situated within previously secured lands including State Gameland #108, Prince Gallitzin State Park and the Rock Run Recreation Area. The nearly 10 mile corridor is planned to include a maintained dirt trail. The corridor has been planned for only pedestrian and/or bicyclists. The local communities have expressed concern regarding the use of ATV's within the corridor due to the potentially adverse impacts on adjoining residential properties and Prince Gallitzin State Park.

C-18 ALT. Rock Run Connector Alternative

This alternate route bypasses State Gameland #108 and most of Prince Gallitzin State Park. This 9 mile corridor is envisioned to include a marked and maintained dirt trail.

C-19 Duman Dam Connector

This recreational corridor is intended to link the Colver Connector Greenway to Duman Lake. This approximately 5-mile corridor is envisioned to include a marked and maintained dirt trail.

Part Four – Greenways and Open Space Vision

Table 5: Cambria County Projects Summary

#	Project / Corridor Name	Type of Corridor	Total Project Length (mi)	Length of Trail Constructed (mi.) ¹	Length of Water Trail (mi.)	Unimproved/ Unsecured Project / Corridor Area (acres)	Low and High Corridor Acquisition Cost Estimates ²			Low and High Land Trail Improvement Cost Estimates			Water Trail Improvement Cost Estimate	Low and High Total Cost Estimates (Acquisition and Improvement)		
							\$	to	\$	\$	to	\$		\$	to	\$
Regional Project Corridors (within Cambria County)																
A	Ghost Town Trail Connector	IV	22.5	10.8		1,938.6	\$ 436,000	to	\$ 1,309,000	\$ 466,000	to	\$ 1,049,000	\$ -	\$ 902,000	to	\$ 2,358,000
B	Main Line Canal Greenway: Pennsylvania Millennium Trail	IV	30.0	28.4		492.3	\$ 111,000	to	\$ 332,000	\$ 65,000	to	\$ 147,000	\$ -	\$ 176,000	to	\$ 479,000
D	Quemahoning Greenway	III, V	4.7	0.0	4.7	938.4	\$ 211,000	to	\$ 633,000	\$ 47,000	to	\$ 71,000	\$ 9,460	\$ 267,460	to	\$ 713,460
E	Allegheny Front Wildlife Corridor	I	4.0	4.0		-	\$ -	to	\$ -	\$ -	to	\$ -	\$ -	\$ -	to	\$ -
<i>Regional Project Corridors Subtotal</i>			<i>61.2</i>	<i>43.2</i>	<i>4.7</i>	<i>3,369.3</i>	<i>\$ 758,000</i>	<i>to</i>	<i>\$ 2,274,000</i>	<i>\$ 578,000</i>	<i>to</i>	<i>\$ 1,267,000</i>	<i>\$ 9,460</i>	<i>\$ 1,345,460</i>	<i>to</i>	<i>\$ 3,550,460</i>
County Project Corridors																
C-1	Susquehanna Trail	II, V	14.8	-	2.2	5,578.2	\$ 1,254,000	to	\$ 3,765,000	\$ 22,000	to	\$ 22,000	\$ 4,309	\$ 1,280,309	to	\$ 3,791,309
C-2	Carrolltown Trail	III	5.2	3.7		581.1	\$ 131,000	to	\$ 392,000	\$ 15,000	to	\$ 23,000	\$ -	\$ 146,000	to	\$ 415,000
C-3	Vintondale - Susquehanna Trail	II	15.4	3.7		4,416.1	\$ 993,000	to	\$ 2,981,000	\$ 18,000	to	\$ 18,000	\$ -	\$ 1,011,000	to	\$ 2,999,000
C-4	Gameland to Gameland Trail	II	3.5	-		1,336.4	\$ 300,000	to	\$ 902,000	\$ -	to	\$ -	\$ -	\$ 300,000	to	\$ 902,000
C-5	Clearfield Creek Wildlife Corridor	I	16.0	8.0		3,021.5	\$ 679,000	to	\$ 2,040,000	\$ -	to	\$ -	\$ -	\$ 679,000	to	\$ 2,040,000
C-6	Colver Connector	III	5.5	-		2,091.8	\$ 470,000	to	\$ 1,412,000	\$ 8,000	to	\$ 8,000	\$ -	\$ 478,000	to	\$ 1,420,000
C-7	Nanty Glo North Trail	III	6.8	-		2,556.7	\$ 575,000	to	\$ 1,726,000	\$ 10,000	to	\$ 10,000	\$ -	\$ 585,000	to	\$ 1,736,000
C-8	Williams Run Trail	II	7.4	4.2		1,220.2	\$ 274,000	to	\$ 824,000	\$ -	to	\$ -	\$ -	\$ 274,000	to	\$ 824,000
C-9	Blacklick Creek Wildlife Corridor	I	7.1	-		2,672.9	\$ 601,000	to	\$ 1,804,000	\$ -	to	\$ -	\$ -	\$ 601,000	to	\$ 1,804,000
C-10	Willdwood Springs Trail	II	7.4	0.9		2,440.5	\$ 548,000	to	\$ 1,647,000	\$ 10,000	to	\$ 10,000	\$ -	\$ 558,000	to	\$ 1,657,000

Part Four – Greenways and Open Space Vision

Table 5: Cambria County Projects Summary (Continued)

#	Project / Corridor		Total Project Length (mi)	Length of Trail Constructed (mi.) ¹	Length of Water Trail (mi.)	Unimproved/ Unsecured Project / Corridor Area (acres)	Low and High Corridor Acquisition Cost Estimates ²			Low and High Land Trail Improvement Cost Estimates			Water Trail Improvement Cost Estimate	Low and High Total Cost Estimates (Acquisition and Improvement)		
	Name	Type of Corridor					\$	to	\$	\$	to	\$		to	\$	to
C-11	Laurel Run Trail	II	9.5	1.1		3,195.8	\$ 718,000	to	\$ 2,157,000	\$ 13,000	to	\$ 13,000	\$ -	\$ 731,000	to	\$ 2,170,000
C-12	Little Conemaugh Trail	II	4.6	0.5		1,568.9	\$ 353,000	to	\$ 1,059,000	\$ 6,000	to	\$ 6,000	\$ -	\$ 359,000	to	\$ 1,065,000
C-13	Lilly Reservoirs Wildlife Corridor	I	2.5	1.7		290.5	\$ 65,000	to	\$ 196,000	\$ -	to	\$ -	\$ -	\$ 65,000	to	\$ 196,000
C-14	Johntown - Portage Trail	II	11.7	11.7		-	\$ -	to	\$ -	\$ -	to	\$ -	\$ -	\$ -	to	\$ -
C-15	Flood Memorial Wildlife Corridor	I	11.7	-		4,416.1	\$ 993,000	to	\$ 2,981,000	\$ -	to	\$ -	\$ -	\$ 993,000	to	\$ 2,981,000
C-16	Portage South Trail	II	5.4	0.3		1,917.5	\$ 431,000	to	\$ 1,294,000	\$ -	to	\$ -	\$ -	\$ 431,000	to	\$ 1,294,000
C-17	Scalp Level Loop	III	2.5	0.9		581.1	\$ 131,000	to	\$ 392,000	\$ 2,000	to	\$ 2,000	\$ -	\$ 133,000	to	\$ 394,000
C-18	Rock Run Connector	III	10.2	10.2		-	\$ -	to	\$ -	\$ -	to	\$ -	\$ -	\$ -	to	\$ -
C-18 alt.	Rock Run Connector Alternate	III	9.2	4.0		1,963.5	\$ 441,000	to	\$ 1,325,000	\$ 8,000	to	\$ 8,000	\$ -	\$ 449,000	to	\$ 1,333,000
C-19	Duman Dam Connector	III	5.5	-		2,076.8	\$ 467,000	to	\$ 1,402,000	\$ 55,000	to	\$ 83,000	\$ -	\$ 522,000	to	\$ 1,485,000
<i>County Project Corridors Subtotal</i>			<i>161.9</i>	<i>50.9</i>	<i>2.2</i>	<i>41,925.5</i>	<i>\$ 9,424,000</i>	<i>to</i>	<i>\$ 28,299,000</i>	<i>\$ 167,000</i>	<i>to</i>	<i>\$ 203,000</i>	<i>\$ 4,309</i>	<i>\$ 9,595,309</i>	<i>to</i>	<i>\$ 28,506,309</i>
<i>Project Corridors Total (Regional + County)</i>			<i>223.1</i>	<i>94.1</i>	<i>6.9</i>	<i>45,294.8</i>	<i>\$ 10,182,000</i>	<i>to</i>	<i>\$ 30,573,000</i>	<i>\$ 745,000</i>	<i>to</i>	<i>\$ 1,470,000</i>	<i>\$ 13,769</i>	<i>\$ 10,940,769</i>	<i>to</i>	<i>\$ 32,056,769</i>

1: Also includes portions of project corridors that are under public control or have been committed to future trail improvements.

2: Acquisition costs estimated at \$900 per acre (low = 25% of full cost, high = 75% of full cost).

The statistical data for regional greenway project corridor C is not included as it is extremely limited in scope in Cambria County.

Corridor Type:

I: Open Space - unblazed / unmarked; public access permitted (price: n/a)

II: Maintained Dirt Trail - blazed / marked; pedestrian trail approximately 2' wide (price: \$1,500/mile)

III: Improved / Maintained Dirt Trail - blazed / marked; multipurpose trail approximately 6' wide (price: \$10,000-\$15,000/mile)

IV: Improved / Maintained Crushed Aggregate / Asphalt Trail - blazed / marked; multipurpose trail approximately 6'-10' wide (price: \$40,000-\$90,000/mile)

V: Water Trail - public access points (price: \$10,000 per access point approximately every 5 miles)